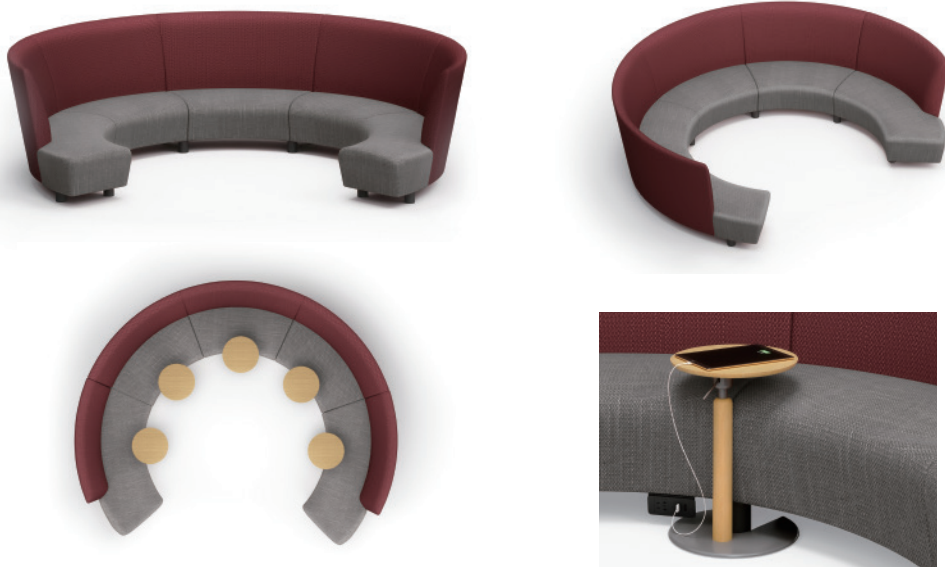


All Around



Product 产品	Width 宽度 (mm)	Depth 深度 (mm)	Height 高度 (mm)	Seat / Back Color 座椅/座背颜色	Material 物料
End Sofa (L/R) 边位沙发 (左/右)	1,030	650	900	62 Fabric Colors Options Available 62种布料颜色	Fabric 布料
Mid Sofa 中间位沙发	740	650	900		
Transition Sofa (L/R) 连接沙发 (左/右)	1,150	650	900		
End Leg 边位脚	450	120	100	Clay (CL), Ink Black (BL) 灰凝土 (CL), 墨黑 (BL)	Powder Paint 金属喷粉
Mid Leg 中间脚	450	170	100		

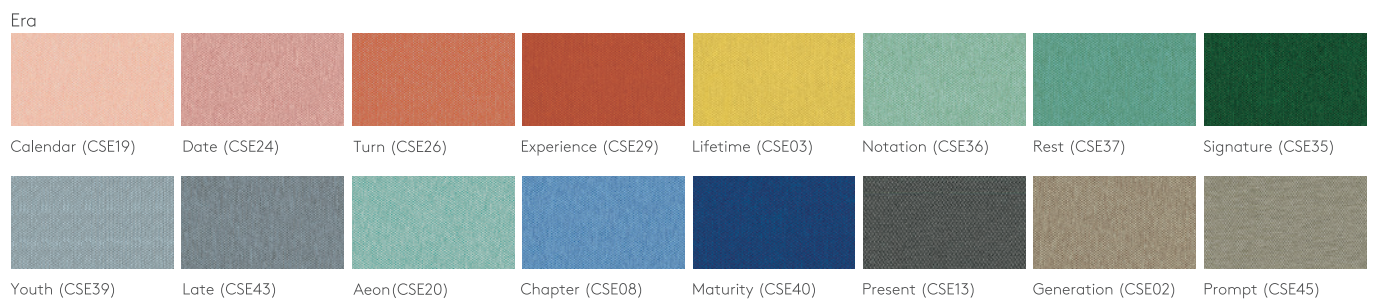
C-Shape Sofa
C型沙发



S-Shape Sofa
S型沙发



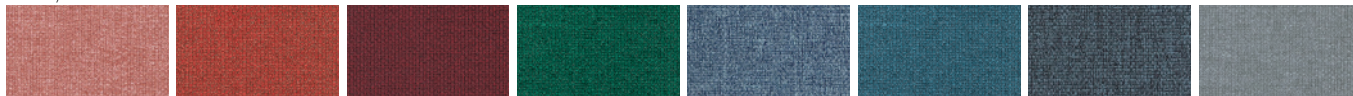
Seat Fabric 座椅布料



Material Option 物料选择

Seat Fabric 座椅布料

Medley

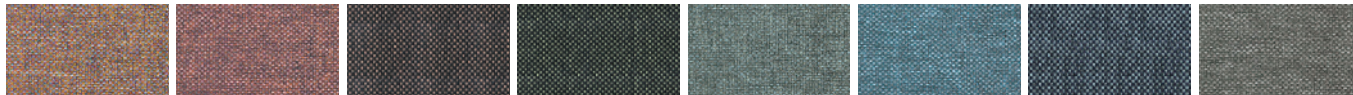


63064 (MD27) 63016 (MD09) 64102 (MD29) 68070 (MD32) 66144 (MD30) 67053 (MD31) 66010 (MD17) 66008 (MD15)



60003 (MD01) 61002 (MD04) 60167 (MD23)

Rivet



Molten (EGL09) Forge (EGL12) Woodrose (EGL33) Hemlock (EGL34) Tensile (EGL20) Quench (EGL23) Crucible (EGL24) Gaivanise (EGL26)



Grey Brindle (EGL50)

Blazer

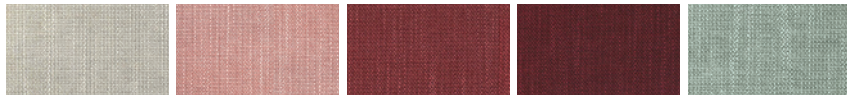


Stanford (CUZ2R) Barlborough (CUZ3D) Goldsmith (CUZ39) Scottsdale (CUZ3E) Barnard (CUZ2S) Latymer (CUZ33) Woodcroft (CUZ2Z) Marymount (CUZ3C)



Cardiff (CUZ1N) Glenalmond (CUZ62) Bromsgrove (CUZ35) Fairfield (CUZ47) Surrey (CUZ1E)

Silex

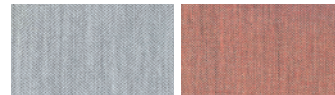


SX02 SX88 SX08 SX53 SX10

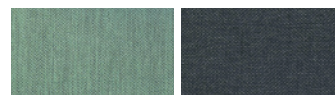


SX33 SX70 SX12 SX30

Vico



VC03 VC41



VC17 VC25

Powder Paint 金属喷粉

Clay (CL) Ink Black (BL)
灰凝土 墨黑

Remarks 备注:

Color variations may occur on soft copies or printed matters. Please refer to swatch cards or actual product samples for color selection.
颜色可能因电子档或印刷效果而出现差异，当选择颜色时，可参考色卡或真实样本。

Lamex

Office & Showroom 分行及展厅

Shanghai 上海
Tel: (86) 21 6278 8888

Beijing 北京
Tel: (86) 10 8521 7588

Guangzhou 广州
Tel: (86) 20 3892 2422

Shenzhen 深圳
Tel: (86) 769 8203 1018

Dongguan 东莞
Tel: (86) 769 8203 1111

Hong Kong 香港
Tel: (852) 2828 6888

Singapore 新加坡
Tel: (65) 6817 8750

Customer Service Hotline 客户服务热线

Mainland China 中国大陆
Tel: (86) 800 820 6073 | (86) 400 686 8073

Hong Kong & Asia Pacific 香港及亚太区
Tel: (852) 2828 6000

www.lamex.com