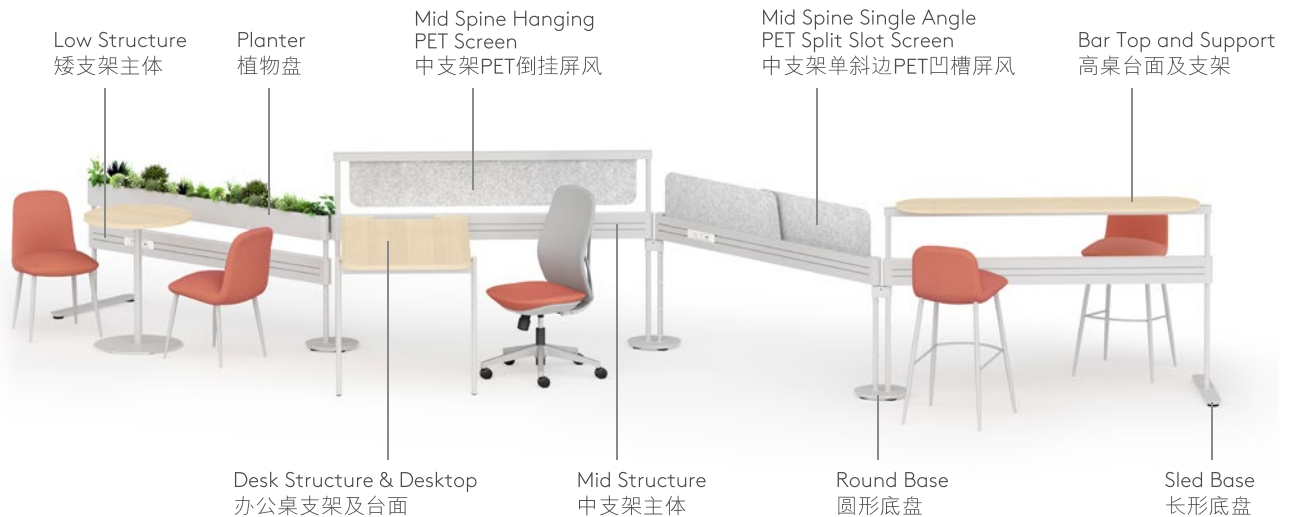


# Quay

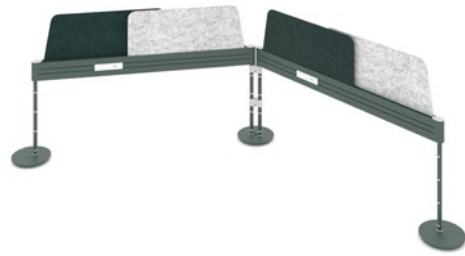


Product 产品	Depth 深度 (mm)	Height 高度 (mm)	Width 宽度 (mm)	Color 颜色	Material 物料	
Double Spine (120D Mid Spine) 120度电力支架	300	750	1600/1800	6 Powder Paint Color Option 6种金属喷粉颜色选择	MFC, PET, Powder Paint 三聚氰胺板、PET、 金属喷粉	
Single Spine (Straight Mid Spine) 独立电力支架	700					
Mid Structure 中支架主体	60	740	1380/1580/ 1780			
Low Structure 矮支架主体	60	490				
Round Bbase & Caster & Glide 圆形底盘配脚轮/脚垫	300	32	300			
Slid Base & Caster & Glide 长形底盘配脚轮/脚垫	700	32	90			
Desk Structure 办公桌支架	665/765	750	930/1130			
Modesty Screen 脚挡板	20	400	800/1000			
Mid Hanging Screen Support 倒挂屏风支架	45	380/480	1375/1575/ 1775			
Bar Top Support 高桌支架	45	310	1375/1575/ 1775			
Planter 植物盘	100	280	1390/1590/ 1790			
Desk Worktop 台面	600/700	750	1200/1400			8 MFC Color Option 8种三聚氰胺板颜色选择
Bar Top 高桌台面	350	25	1250/1450/ 1650			
Mid Spine Single Angle PET Split Slot Screen 中支架单斜边PET凹槽屏风	12	530/630	800/940/ 1040	2 PET Color Option 2种PET颜色选择		
Mid Spine Hanging PET Screen 中支架PET倒吊屏风	12	280/380	1200/1450/ 1600			





Quay Single Spine  
独立电力支架



Quay Double Spine (120D Mid Spine)  
120度电力支架



Quay Spine with Desktop  
电力支架带办公台



Quay Spine with Duplex eHAD  
电力支架带Duplex可移动升降台



Quay Spine with Hockey Training Table  
电力支架带Hockey可移动培训桌





## Material Option 物料选择

### MFC 三聚氰胺板



Warm White (MFH)  
暖白色



Maple (MFP)  
枫木色



Sunlight Ash (MFAS)  
晨光白蜡木



Oak (MFLO/COLOR310)  
橡木色



Cherry (MFY)  
樱桃木色



Walnut (MFLW/COLOR309)  
胡桃木色

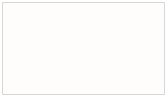


Chocolate Ash (MFAC)  
巧克力白蜡木

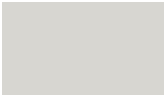


Vintage Ash (MFAV)  
复古白蜡木

### Power Paint 金属喷粉



Warm White (H)  
暖白色



Clay (CL)  
灰凝土



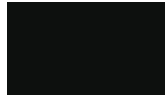
Terra Rosa (TR)  
陶瓷红



Healing Green (HG)  
疗愈绿

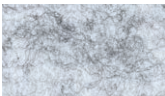


Core Gray (CG)  
硬核灰



Black (BK)  
黑色

### PET



Cloud (TP03)  
云灰



Jungle Green (TP11)  
墨绿

### Remarks 备注:

Color variations may occur on soft copies or printed matters. Please refer to swatch cards or actual product samples for color selection.  
颜色可能因电子档或印刷效果而出现差异，当选择颜色时，可参考色卡或真实样本。

## Lamex

### Office & Showroom 分行及展厅

Shanghai 上海  
Tel: (86) 21 6278 8888

Beijing 北京  
Tel: (86) 10 8521 7588

Guangzhou 广州  
Tel: (86) 20 3892 2422

Shenzhen 深圳  
Tel: (86) 769 8203 1018

Dongguan 东莞  
Tel: (86) 769 8203 1111

Hong Kong 香港  
Tel: (852) 2828 6888

Singapore 新加坡  
Tel: (65) 6817 8750

### Customer Service Hotline 客户服务热线

Mainland China 中国大陆  
Tel: (86) 800 820 6073 | (86) 400 686 8073

Hong Kong & Asia Pacific 香港及亚太区  
Tel: (852) 2828 6000

www.lamex.com