

Sure



Lamex

Product 产品	Width 宽度 (mm)	Depth 深度 (mm)	Height 高度 (mm)	Seat Depth 座深 (mm)	Seat Height 座高 (mm)	Seat Color 座椅颜色	Material 物料
High Chair 高椅	410	560	985	410	805	49 Fabric Colors and 5 Powder Paint Option 49种布料颜色及5种金属颜色选择	Fabric and Powder Paint 布料及金属喷粉
Café Chair 咖啡椅	410	525	755	410	475		



Sure Café Chair
咖啡椅



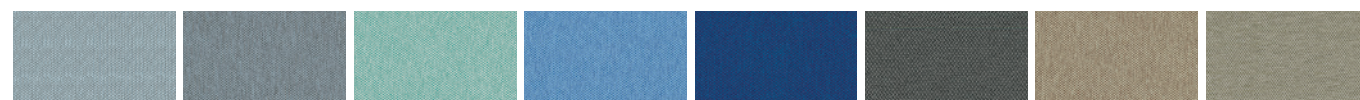
Sure High Chair
高椅

Material Option 物料选择

Seat Fabric 座椅布料

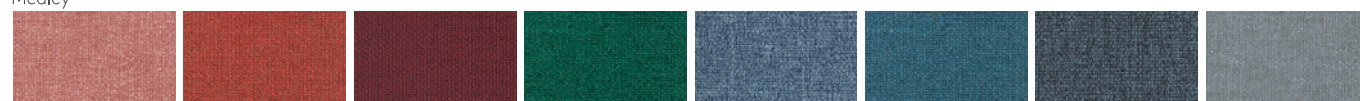


Calendar (CSE19) Date (CSE24) Turn (CSE26) Experience (CSE29) Lifetime (CSE03) Notation (CSE36) Rest (CSE37) Signature (CSE35)



Youth (CSE39) Late (CSE43) Aeon (CSE20) Chapter (CSE08) Maturity (CSE40) Present (CSE13) Generation (CSE02) Prompt (CSE45)

Medley

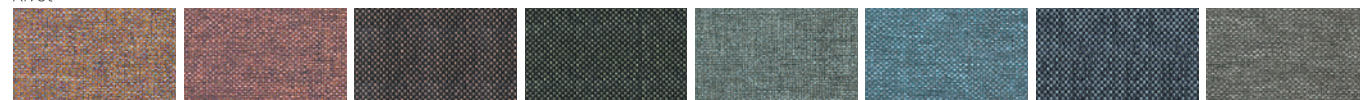


63064 (MD27) 63016 (MD09) 64102 (MD29) 68070 (MD32) 66144 (MD30) 67053 (MD31) 66010 (MD17) 66008 (MD15)



60003 (MD01) 61002 (MD04) 60167 (MD23)

Rivet



Molten (EGL09) Forge (EGL12) Woodrose (EGL33) Hemlock (EGL34) Tensile (EGL20) Quench (EGL23) Crucible (EGL24) Gaivanise (EGL26)



Grey Brindle (EGL50)

Material Option 物料选择

Seat Fabric 布料

Silex



SX02

SX88

SX08

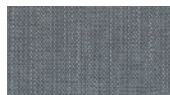
SX53

SX10

SX33

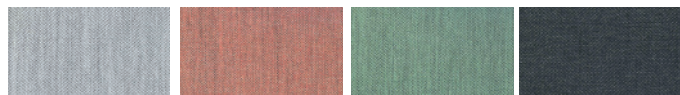
SX70

SX12



SX30

Vico



VC03

VC41

VC17

VC25

Powder Paint 金属喷粉



Warm White (H)
暖白色

Clay (CL)
灰凝土

Sage (SA)
香草绿

Stone (ST)
岩灰

Ink Black (BL)
墨黑

Remarks 备注:

Color variations may occur on soft copies or printed matters. Please refer to swatch cards or actual product samples for color selection.
颜色可能因电子档或印刷效果而出现差异，当选择颜色时，可参考色卡或真实样本。

Lamex

Office & Showroom 分行及展厅

Shanghai 上海
Tel: (86) 21 6278 8888

Beijing 北京
Tel: (86) 10 8521 7588

Guangzhou 广州
Tel: (86) 20 3892 2422

Shenzhen 深圳
Tel: (86) 769 8203 1018

Dongguan 东莞
Tel: (86) 769 8203 1111

Hong Kong 香港
Tel: (852) 2828 6888

Singapore 新加坡
Tel: (65) 6817 8750

Customer Service Hotline 客户服务热线

Mainland China 中国大陆
Tel: (86) 800 820 6073 | (86) 400 686 8073

Hong Kong & Asia Pacific 香港及亚太区
Tel: (852) 2828 6000

www.lamex.com