

# All Around

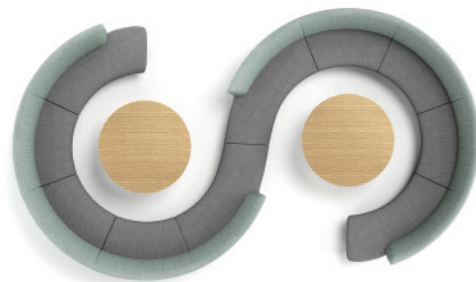


Product 产品	Width 宽度 (mm)	Depth 深度 (mm)	Height 高度 (mm)	Seat / Back Color 座椅/座背颜色	Material 物料
End Sofa (L/R) 边位沙发 (左/右)	1,030	650	900	60 Fabric Colors Options Available 60种布料颜色	Fabric 布料
Mid Sofa 中间位沙发	740	650	900		
Transition Sofa (L/R) 连接沙发 (左/右)	1,150	650	900		
End Leg 边位脚	450	120	100	Clay (CL), Ink Black (BL) 灰凝土 (CL), 墨黑 (BL)	Powder Paint 金属喷粉
Mid Leg 中间脚	450	170	100		

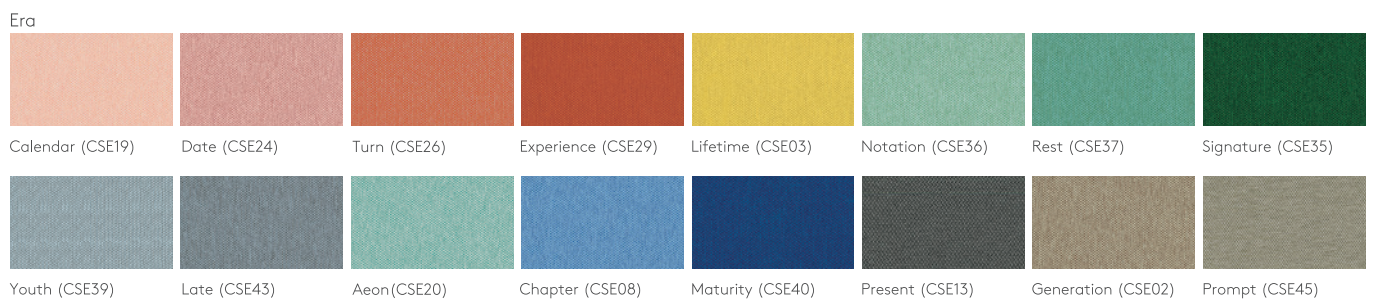
C-Shape Sofa  
C型沙发



S-Shape Sofa  
S型沙发



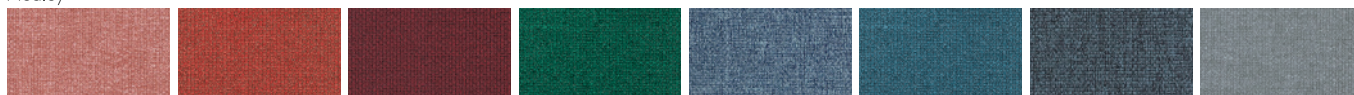
Seat Fabric 座椅布料



## Material Option 物料选择

## Seat Fabric 座椅布料

## Medley



63064 (MD27)

63016 (MD09)

64102 (MD29)

68070 (MD32)

66144 (MD30)

67053 (MD31)

66010 (MD17)

66008 (MD15)

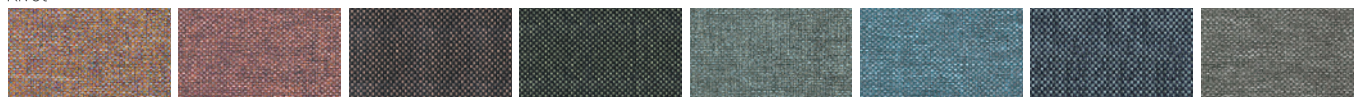


60003 (MD01)

61002 (MD04)

60167 (MD23)

## Rivet



Molten (EGL09)

Forge (EGL12)

Woodrose (EGL33)

Hemlock (EGL34)

Tensile (EGL20)

Quench (EGL23)

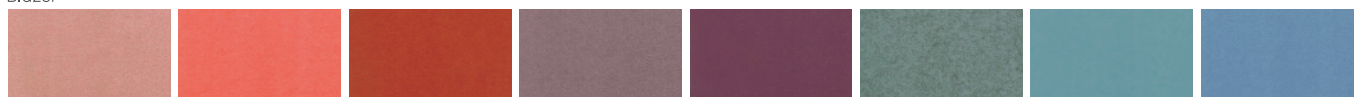
Crucible (EGL24)

Gavanise (EGL26)



Grey Brindle (EGL50)

## Blazer



Stanford (CUZ2R)

Barlborough (CUZ3D)

Goldsmith (CUZ39)

Scottsdale (CUZ3E)

Barnard (CUZ2S)

Latymer (CUZ33)

Woodcroft (CUZ2Z)

Marymount (CUZ3C)



Cardiff (CUZ1N)

Glenalmond (CUZ62)

Bromsgrove (CUZ35)

Fairfield (CUZ47)

Surrey (CUZ1E)

## Silex



SX02

SX88

SX08

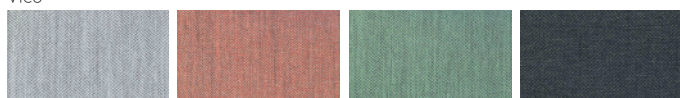
SX53

SX10

SX30

SX70

## Vico



VC03

VC41

VC17

VC25

## Powder Paint 金属喷粉

Clay (CL)  
灰凝土Ink Black (BL)  
墨黑

## Remarks 备注:

Color variations may occur on soft copies or printed matters. Please refer to swatch cards or actual product samples for color selection.

颜色可能因电子档或印刷效果而出现差异，当选择颜色时，可参考色卡或真实样本。

# Lamex

## Office &amp; Showroom 分行及展厅

Shanghai 上海

Tel: (86) 21 6278 8888

Beijing 北京

Tel: (86) 10 8521 7588

Guangzhou 广州

Tel: (86) 20 3892 2422

Shenzhen 深圳

Tel: (86) 769 8203 1018

Dongguan 东莞

Tel: (86) 769 8203 1111

Hong Kong 香港

Tel: (852) 2828 6888

Singapore 新加坡

Tel: (65) 6817 8750

## Customer Service Hotline 客户服务热线

Mainland China 中国大陆

Tel: (86) 800 820 6073 | (86) 400 686 8073

Hong Kong &amp; Asia Pacific 香港及亚太区

Tel: (852) 2828 6000

www.lamex.com